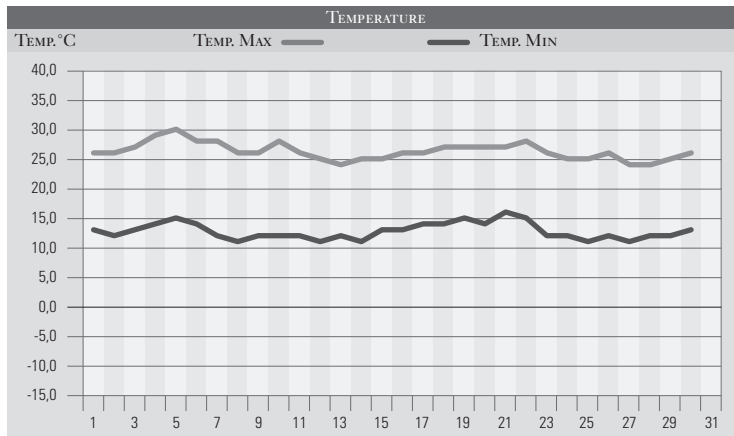


SETTEMBRE 1980

GIORNO	T.MIN	T.MAX	PREC.(mm)	OSSERVAZIONI
1	13,0	26,0		Sereno, correnti da nord-ovest
2	12,0	26,0		Sereno, alta pressione in rimonta
3	13,0	27,0		Tempo stabile, sereno
4	14,0	29,0		Sereno
5	15,0	30,0		Sereno, caldo
6	14,0	28,0		Sereno-variabile nel pomeriggio
7	12,0	28,0		Sereno, debole ventilazione da est
8	11,0	26,0		Sereno stabile
9	12,0	26,0		Sereno
10	12,0	28,0		Variabile da ovest
11	12,0	26,0		Variabile
12	11,0	25,0		Sereno
13	12,0	24,0		Poco nuvoloso
14	11,0	25,0		Poco nuvoloso
15	13,0	25,0		Sereno, alta pressione che continua
16	13,0	26,0		Sereno
17	14,0	26,0		Sereno, la siccità si acuisce
18	14,0	27,0		Sereno
19	15,0	27,0		Sereno
20	14,0	27,0		Sereno
21	16,0	27,0		Sereno
22	15,0	28,0		Sereno
23	12,0	26,0		Velato
24	12,0	25,0		Variabile
25	11,0	25,0		Sereno, di nuovo stabile
26	12,0	26,0		Sereno
27	11,0	24,0		Sereno
28	12,0	24,0		Poco nuvoloso, correnti deboli da sud
29	12,0	25,0		Sereno
30	13,0	26,0		Alta pressione, tempo stabile
31				
Med.Tot.	12,8	26,3	0,0	



RIEPILOGO		
GIORNI DI PIOGGIA	4	Mese decisamente anomalo, non si è registrata alcuna precipitazione in un mese che sfiora i 100mm di media. Siccità grave perchè si manifesta in un mese autunnale solitamente ricco di fenomeni piovosi. L'anomalia è estesa anche alle temperature che sono state superiori alle medie del periodo.
TEMPERATURE MIN °C	11,0	
TEMPERATURE MAX °C	30,0	
PIOGGIA MAX 24H (MM)	0,0	