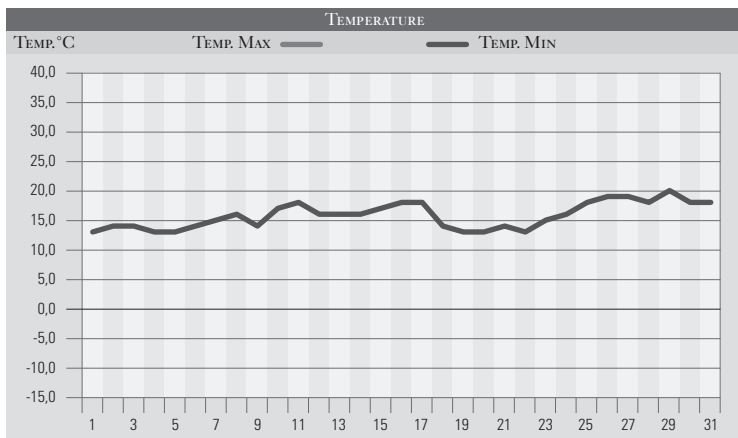


LUGLIO 1980

GIORNO	T _{MIN}	T _{MAX}	PREC.(mm)	OSSERVAZIONI
1	13,0	29,0		Nuvoloso, correnti da ovest
2	14,0	29,0		Poco nuvoloso, variabile
3	14,0	30,0		Poco nuvoloso
4	13,0	29,0		Variabile, sempre da ovest
5	13,0	29,0		Poco nuvoloso-sereno
6	14,0	29,0		Sereno
7	15,0	29,0		Sereno
8	16,0	30,0		Sereno
9	14,0	29,0		Sereno-nuvoloso da sud
10	17,0	30,0		Nuvoloso-velato, temperatura in aumento
11	18,0	31,0		Poco nuvoloso
12	16,0	28,0		Sereno-poco nuvoloso
13	16,0	30,0		Poco nuvoloso
14	16,0	31,0		Sereno, qualche velatura
15	17,0	32,0		Sereno, variabile il pomeriggio
16	18,0	32,0		Poco nuvoloso-variabile
17	18,0	30,0	20,0	Nuvoloso, temporale nella notte
18	14,0	29,0		Variabile, ancora rovesci sparsi a nord-est reg.
19	13,0	29,0		Poco nuvoloso, bella giornata
20	13,0	28,0		Variabile, qualche rovescio in montagna
21	14,0	27,0		Temporali al mattino al nord-est reg. poi poco nuvoloso
22	13,0	26,0		Poco nuvoloso, correnti da est fresche
23	15,0	30,0		Sereno, temperatura in aumento
24	16,0	31,0		Sereno
25	18,0	33,0		Sereno
26	19,0	33,0		Sereno
27	19,0	32,0		Sereno
28	18,0	31,0		Sereno, poco nuvoloso
29	20,0	33,0		Sereno, ancora caldo
30	18,0	32,0		Sereno-tempo sempre più stabile
31	18,0	31,0		Sereno, poco nuvoloso
MED.TOT.	15,8	30,1	20,0	



RIEPILOGO		
GIORNI DI PIOGGIA	1	Mese tipicamente estivo con temperature neanche molto elevate. Un solo episodio temporalesco di rilievo e anche questo rientra nella tipicità climatica di luglio.
TEMPERATURE MIN °C	13,0	
TEMPERATURE MAX °C	33,0	
PIOGGIA MAX 24H (MM)	20,0	