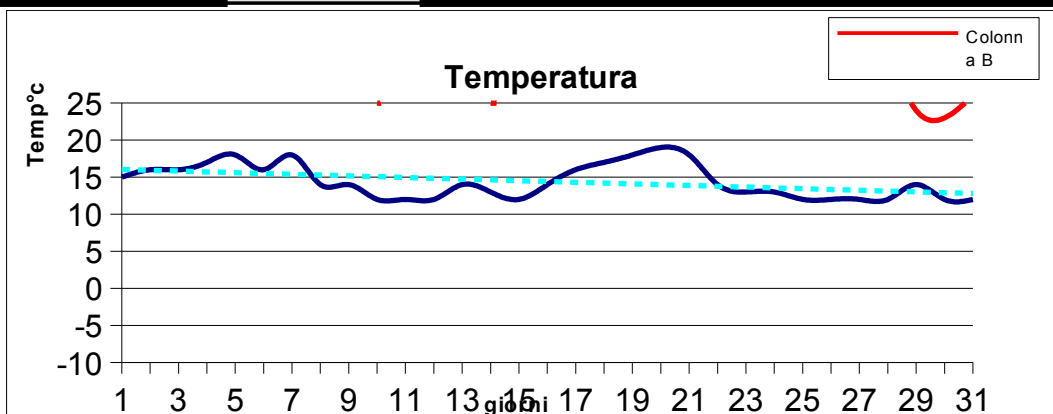


LUGLIO 2014

GIORNO	Tmin	Tmax	precipitaz.(mm)	osservazioni
1	15,0	29,0	0,0	sereno/poco nuvoloso
2	16,0	30,0	0,0	sereno/poco nuvoloso
3	16,0	31,0	0,0	sereno/poco nuvoloso
4	17,0	33,0	0,0	sereno/poco nuvoloso
5	18,0	29,0	0,0	variabile al mattino poi sereno
6	16,0	31,0	0,0	sereno/poco nuvoloso
7	18,0	32,0	0,0	sereno al mattino poi nuvoloso
8	14,0	27,0	3,0	variabile rovesci nella notte
9	14,0	28,0	0,0	sereno al mattino, piogge dalla serata
10	12,0	25,0	33,0	variabile, piogge nella notte
11	12,0	27,0	5,0	variabile con rovesci sparsi
12	12,0	26,0	0,0	variabile
13	14,0	27,0	16,0	variabile rovesci, piogge estese in serata
14	13,0	25,0	25,0	variabile, coperto al pom.con temporale forte
15	12,0	27,0	0,0	poco nuvoloso da nord, fresco
16	14,0	30,0	0,0	sereno
17	16,0	30,0	0,0	poco nuvoloso, locali rovesci in montagna
18	17,0	32,0	0,0	sereno
19	18,0	33,0	0,0	velato
20	19,0	33,0	0,0	sereno al mattino poi variabile con piovigine
21	18,0	26,0	5,0	nuvoloso e temporali anche forti (Trevi-Umbertide)
22	14,0	28,0	0,0	variabile da nord
23	13,0	30,0	0,0	poco nuvoloso
24	13,0	29,0	7,0	poco nuvoloso al mattino, temporali estesi al pomeriggio
25	12,0	29,0	0,0	poco nuvoloso al mattino, poi temporali sparsi
26	12,0	29,0	4,0	variabile, temporale esteso nord regione
27	12,0	30,0	0,0	variabile, rovesci sparsi
28	12,0	30,0	12,0	sereno al mattino, forte temporale in serata
29	14,0	24,0	42,0	coperto piogge sparse, estese e torrenziali in serata e nottata
30	12,0	23,0	18,0	molto nuvoloso con piogge abb.in nottata, poi variabile e rovesci sparsi
31	12,0	26,0	0,0	variabile
med,tot	14,4	28,7	170,0	



RIEPILOGO	
giorni di pioggia	11
TEMP MIN °c	12,0
TEMP MAX °c	33,0
MAX PIOGGIA 24/h	42,0