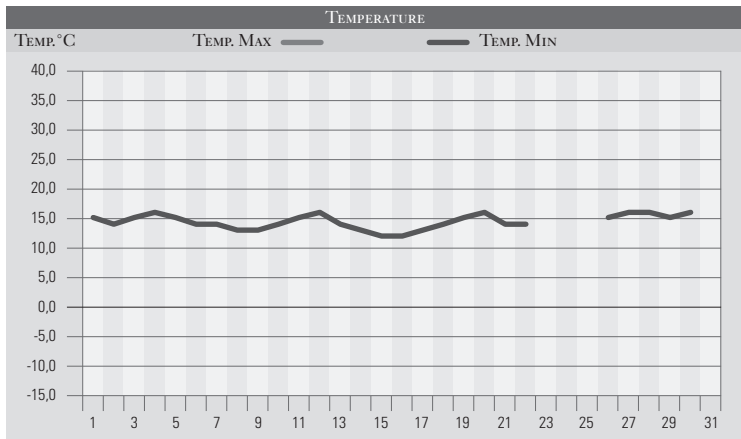


# GIUGNO 1979

GIORNO	T.MIN	T.MAX	PREC.(mm)	OSSERVAZIONI
1	15,0	30,0		Sereno, brezza da nord-est, caldo
2	14,0	31,0		Sereno
3	15,0	31,0		Sereno
4	16,0	29,0		Poco nuvoloso, variabile in serata
5	15,0	28,0	5,0	Nuvoloso, piogge sparse e rovesci
6	14,0	27,0	15,0	Temporalmente anche forti
7	14,0	27,0	10,0	Roveschi e piogge sparse
8	13,0	26,0		Variabile, temporale a sud-est
9	13,0	27,0		Variabile
10	14,0	26,0		Pressione in aumento, poco nuvoloso
11	15,0	27,0		Sereno
12	16,0	27,0		Sereno
13	14,0	28,0	15,0	Nuvoloso, piogge sparse e rovesci
14	13,0	29,0		Variabile, miglioramento
15	12,0	28,0		Poco nuvoloso
16	12,0	26,0		Nuvoloso-variabile
17	13,0	25,0		Variabile, nella notte nubifragio ad Assisi e Foligno
18	14,0	25,0		Variabile, nuvoloso
19	15,0	26,0		Sereno, poco nuvoloso
20	16,0	25,0		Sereno
21	14,0	27,0		Sereno
22	14,0	26,0	5,0	Temporalmente sparsi il pomeriggio, anche forti
23		27,0		Variabile
24		28,0		Variabile, piovachi e rovesci isolati
25		29,0		Temperatura in aumento, prevalenza di sereno
26	15,0	28,0		Sereno, poco nuvoloso
27	16,0	27,0		Sereno
28	16,0	28,0		Sereno
29	15,0	29,0		Sereno, variabile pomeriggio
30	16,0	30,0		Poco nuvoloso-variabile
31				
MED.TOT.	14,4	27,6	50,0	



RIEPILOGO			
GIORNI DI PIOGGIA	5	Dopo l'anomalia di maggio, tutti i parametri meteo di giugno sono stati nella norma, ma il deficit di precipitazioni accumulato a maggio rimane e preoccupa per il prosieguo dell'estate.	
TEMPERATURE MIN °C	12,0		
TEMPERATURE MAX °C	31,0		
PIOGGIA MAX 24h (MM)	15,0		