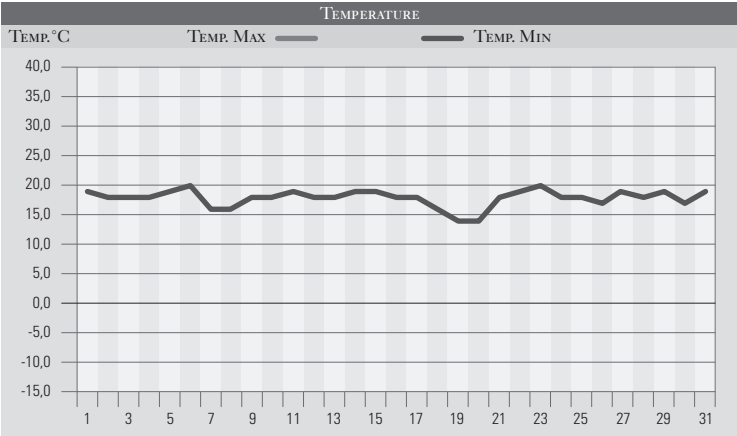


LUGLIO 2006

GIORNO	T.MIN	T.MAX	PREC.(mm)	OSSERVAZIONI
1	19,0	33,0		Sereno
2	18,0	32,0		Poco nuvoloso
3	18,0	31,0		Poco nuvoloso
4	18,0	30,0		Sereno
5	19,0	32,0		Poco nuvoloso
6	20,0	34,0		Nuvoloso, caldo afoso per l'libeccio
7	16,0	27,0	28,0	Coperto,esteso temporale al mattino
8	16,0	29,0		Poco nuvoloso
9	18,0	31,0		Poco nuvoloso
10	18,0	33,0		Sereno, caldo in aumento
11	19,0	34,0		Sereno
12	18,0	34,0		Sereno
13	18,0	33,0		Sereno
14	19,0	34,0		Sereno
15	19,0	33,0		Sereno, deboli venti nord orientali
16	18,0	31,0		Sereno, temp. in lieve diminuzione
17	18,0	29,0		Sereno, secco, visibilità ottima
18	16,0	34,0		Sereno
19	14,0	35,0		Sereno, caldo torrido
20	13,5	35,0		Sereno, caldo torrido
21	18,0	37,5		Sereno
22	19,0	38,0		Sereno, caldo afoso
23	20,0	38,0	13,0	Sereno-nuv. il pom. temporali
24	18,0	37,0		Sereno, attività cumuliforme pom.
25	18,0	37,5	1,0	Sereno, cumuli il pom., rovesci
26	17,0	37,0		Sereno, attività cumuliforme pom.
27	19,0	36,5		Da sereno a poco nuvoloso
28	18,0	35,5		Variabile, giornata calda
29	19,0	30,0	2,0	Rovesci sparsi, forti a sud di Perugia
30	17,0	32,0		Poco nuvoloso da nord
31	19,0	34,0		Poco nuvoloso
MED.TOT.	17,9	33,5	44,0	



RIEPILOGO		
GIORNI DI PIOGGIA	4	Mese con temperature più alte della media.
TEMPERATURE MIN°C	13,5	
TEMPERATURE MAX°C	38,0	
PIOGGIA MAX 24h (MM)	28,0	