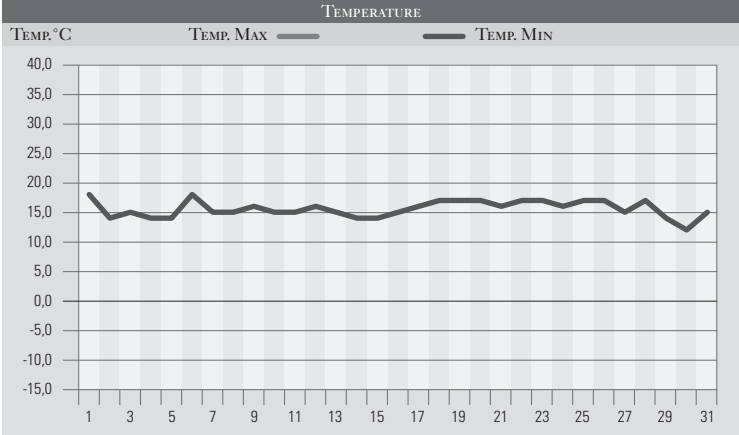


AGOSTO 1989

GIORNO	T.MIN	T.MAX	PREC.(mm)	OSSERVAZIONI
1	18,0	24,0	4,0	Perturbazione da nord-ovest, piovaschi sparsi, fresco
2	14,0	25,0		Sereno
3	15,0	25,0		Sereno o poco nuvoloso
4	14,0	26,0		Sereno
5	14,0	27,0		Nuvol. variabile da sud-ovest, perturbazione africana
6	18,0	26,0	26,0	Piogge torrenziali di notte, giornata calda e velata
7	15,0	29,0		Sereno o poco nuvoloso
8	15,0	31,0		Sereno, caldo
9	16,0	28,0		Nuv. variabile, forti temporali e nubifragi sparsi
10	15,0	27,0		Poco nuvoloso
11	15,0	20,0	27,0	Coperto, piogge estese, temporalesche al mattino
12	16,0	28,0		Sereno o poco nuvoloso
13	15,0	29,0		Sereno
14	14,0	28,0		Poco nuvoloso, caldo
15	14,0	31,0		Sereno
16	15,0	32,0		Sereno, caldo in aumento
17	16,0	31,0		Sereno, caldo
18	17,0	31,0		Sereno
19	17,0	31,0		Sereno o poco nuvoloso
20	17,0	31,0		Sereno
21	16,0	30,0		Sereno, caldo
22	17,0	30,0		Sereno o poco nuvoloso
23	17,0	30,0		Sereno
24	16,0	31,0		Sereno
25	17,0	30,0		Sereno o poco nuvoloso
26	17,0	31,0		Sereno, caldo
27	15,0	30,0		Sereno o poco nuvoloso, caldo, lento peggioramento
28	17,0	27,0	24,0	Tempo perturbato, nubifragio a Gubbio, Gualdo, PG est
29	14,0	22,0		Nuvoloso, freddo in serata, sui Sibillini neve/1600m
30	12,0	23,0		Sereno, giornata fresca e limpida
31	15,0	24,0		Sereno
MED.TOT.	15,6	28,0	81,0	



RIEPILOGO		
GIORNI DI PIOGGIA	4	Mese tipicamente estivo con temperature elevate in linea con le medie o leggermente al di sotto, caratterizzato però da precipitazioni al di sopra delle medie con fenomeni violenti in diversi centri della reg..
TEMPERATURE MIN°C	12,0	
TEMPERATURE MAX°C	32,0	
PIOGGIA MAX 24h (MM)	27,0	